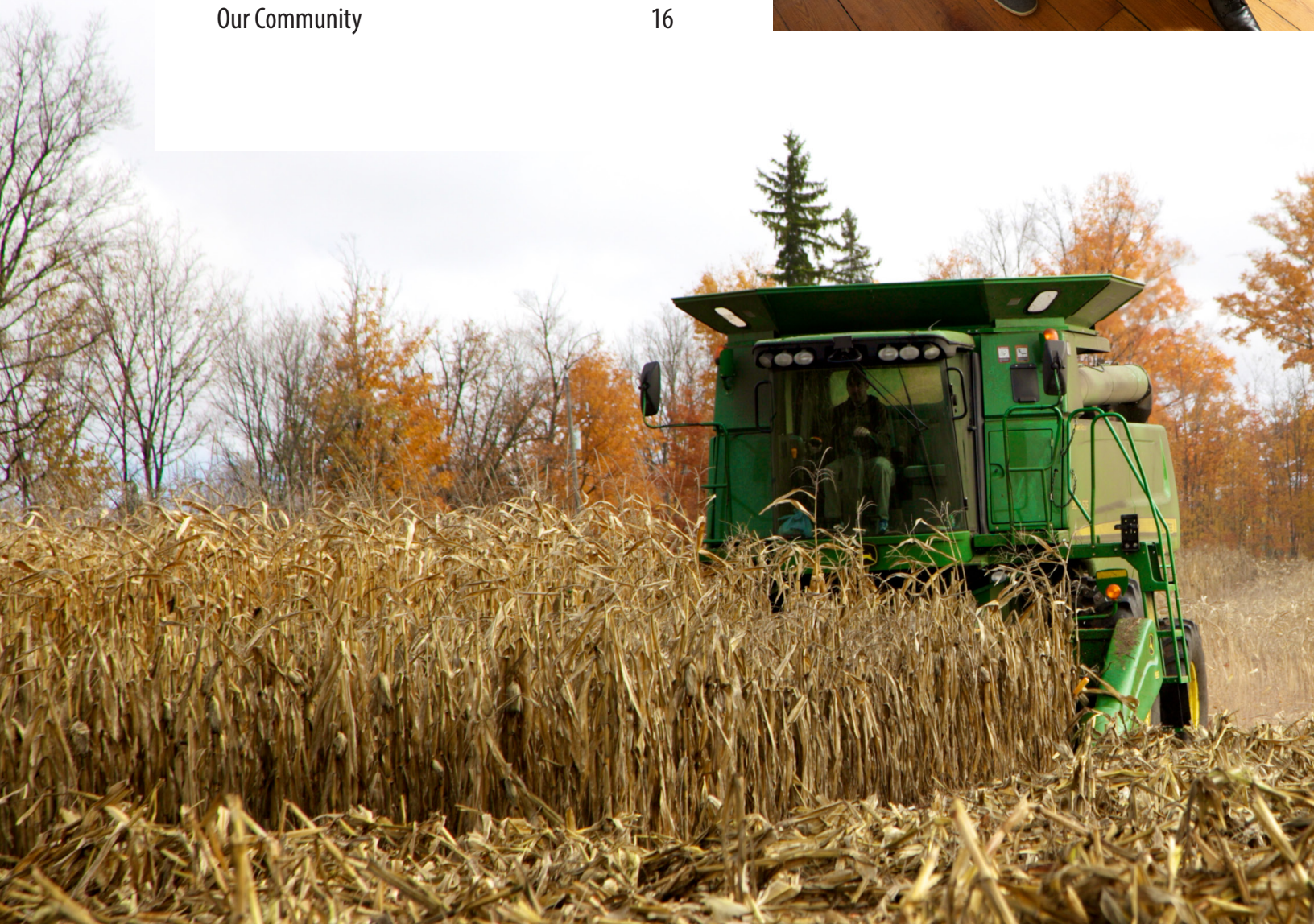


Peterborough & the Kawarthas
Regional Economic
Development Profile

Updated: December 2016

Table of Contents

Choose Peterborough & the Kawarthas	1
We're here to help	2
Tourism Business Services	4
Work in Peterborough & the Kawarthas	6
Peterborough & the Kawarthas Labour Force	8
Invest in Peterborough & the Kawarthas	10
Our Sectors	12
Live in Peterborough & the Kawarthas	14
Our Community	16





Choose Peterborough & the Kawarthas

Peterborough & the Kawarthas has so much to offer in a location with the best of rural cottage country and vibrant urban lifestyle. Join the many businesses and people that are redefining success here.



LIVE

- Exceptional quality of life and work-life balance
- A healthy and active community
- Food scene with amazing diversity of tastes and local ingredients
- Home to 3 leading post-secondary institutions: Trent University, Fleming College and Seneca College's School of Aviation
- A diverse range of recreational experiences

WORK

- Peterborough is one of "Canada's Most Creative Cities"¹
- The community has a rich history in innovation
- Peterborough is a startup community ready for aspiring and established entrepreneurs
- One of the shortest average commute times in Ontario

INVEST

- Strategic location in proximity to markets in Greater Toronto Area and North America
- Existing infrastructure to build your business
- An affordable place to locate and operate your business
- Diverse economic base
- Supportive business ecosystem

¹ http://www.huffingtonpost.ca/richard-florida/canadas-most-creative-cit_b_1608460.html



We're here to help

Peterborough & the Kawartha Economic Development's team of skilled professionals offer confidential, complimentary support services for companies and individuals interested in visiting, locating, growing or starting a business in Peterborough & the Kawartha. If you are interested in any of these services, contacting Peterborough & the Kawartha Economic Development should be your first step.

Business Expansion

If you are looking to expand a business in Peterborough & the Kawartha, or relocate a business here, our business development team can assist at any point in the process. Let us help to make a business expansion or relocation easier for you.

We have a wealth of economic information and market research about the region. We can answer any questions you have.

What We Can Do For You

- Provide professional assistance for your business expansion or relocation
- Assess market opportunities
- Assist with property and building site selection
- Develop strategic partnerships with provincial and federal agencies
- Get you connected with local community partners and organizations, including staffing and training agencies
- Provide access to incentive programs and funding options

Contact our Business Development Team

705-743-0777 Ext. 2127

info@peterboroughed.ca

www.PeterboroughED.ca/expansion



Startups & Small Business

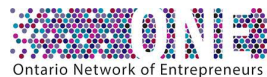
Peterborough & the Kawarthas Business Advisory Centre (BAC) is often an entrepreneur's first point of contact with the business support community. Our knowledgeable business consultants are here to help people of every age at every stage of starting or growing a business. Our services, consultations, tools and resources are offered free of charge in order to help startups and small businesses succeed.

The BAC is one of 57 Small Business Enterprise Centres in the province, funded by the Government of Ontario.

Business Advisory Centre

We offer two programs to support entrepreneurs in Peterborough & the Kawarthas.²

These programs connect business owners with training, mentorship and funding up to \$5000 to start and grow their businesses. These programs are funded by the Government of Ontario.



Contact our Business Advisory Centre

705-743-0777 Ext. 2160
info@peterboroughed.ca
www.PeterboroughED.ca/BAC

Be Your Own Boss.

Are you interested in starting your own business? We can help you as you get started on your entrepreneurial journey.

Let's get you started:

- Writing a business plan
- Accessing funding
- Taking business workshops and seminars
- Networking
- Enhancing your market readiness

Grow Your Small Business

Are you currently operating your own business and looking for advice? We can help you take your business to the next level.

Take advantage of our business reviews and recommendations, resource materials, workspace and connections with industry and community partners.

Helping Businesses to:

- Expand networks
- Introduce new products or services
- Connect with legal, accounting, financial, staffing and marketing professionals

²Businesses operating in the City and County of Peterborough.



Tourism Business Services

Peterborough & the Kawarthas Tourism (PKT) is a division of Peterborough & the Kawarthas Economic Development and is the Official Destination Marketing Organization for the City and County of Peterborough.

Our tourism team provides industry leadership and destination marketing services to attract visitors to the region. PKT has more than 400 registered tourism business partners. Working alongside our stakeholders, PKT strives to deliver exceptional experiences by cultivating a brand that results in increased visitation and return visits, increased spending and overnight stays and rave reviews and recommendations. To accomplish these goals, PKT focuses on brand-aligned destination marketing and tourism development. This is achieved through external marketing and travel media relations, experience development and visitor services.

Visitor Services

Peterborough & the Kawarthas Tourism operates the Visitor Centre located in the City of Peterborough. The centre provides a wide selection of travel information including travel guides, brochures, road maps and trail guides. Professionally trained and knowledgeable travel counsellors are available to assist in planning your experience in Peterborough & the Kawarthas. Visitor services are also offered over the phone via PKT's 1-800-461-6424, by mail, email and through social media (Twitter and Facebook).

Contact our Tourism Team

705-742-2201

info@thekawarthas.ca

www.thekawarthas.ca/tourism-partners



Peterborough
&
THE KAWARTHAS

TOURISM

Business Services

Partnership with PKT is free for all tourism businesses located in Peterborough & the Kawarthas.³

How we can support our tourism businesses:

- Promote your business through the Visitor Centre
- Provide a complimentary business listing on thekawarthas.ca, and in the annual print directory
- Submit your events to an online events calendar
- Provide access to information through a Partnership Bulletin & partner area of the PKT website
- Provide opportunities to showcase your business on familiarization tours
- Host education and networking opportunities

- Provide complimentary publications for your visitors
- Provide opportunities to leverage the PKT brand
- Provide opportunities to buy-in to marketing initiatives
- Access to tourism research and travel trends
- Access to PKT branding toolkit
- Access to business consultations for experience development and marketing
- Access to provincial and regional tourism representation and information

Peterborough
&
THE KAWARTHAS

TOURISM TRAVEL FACTS

WE SEE

3.1+ MILLION
VISITORS, ANNUALLY



This represents 55% of visits in Region 8



ANNUAL VISITOR SPENDING = **2504** TOURISM INDUSTRY JOBS

VISITORS SPEND AN AVERAGE OF \$99

Overnight visitors spend \$152...

While day trippers spend \$59

Overnight visitors stay an average of **2.6 nights**

97%
of visitors are from

ONTARIO

Primarily from the Greater Toronto Area, York, Durham, Hills of Headwaters, Kawarthas Northumberland

US visitors:
New York, Pennsylvania, Ohio, Michigan



International visitors:
Europe – UK, Germany

PRIMARY ACTIVITIES

1



OUTDOORS

2



PARKS

3



HISTORIC

Next to transportation



visitors spend the most on Food & Beverage

Source: Stats Canada, Travel Survey of the Residents of Canada 2013, International Travel Survey 2013, Ontario Ministry of Tourism, Culture & Sport.

³ Businesses operating in the City and County of Peterborough.



Work in Peterborough & the Kawarthas

Creative Economy

Peterborough is one of Canada's most Creative Cities with over 30% of its labour force being employed in creative economy occupations.⁴ This labour force is expected to grow by 23% by 2020.⁵

Through creative businesses and entrepreneurs, Peterborough & the Kawarthas is prepared to grow and lead the way for creative communities in the Province of Ontario.

Innovative Minds

Peterborough & the Kawarthas attracts great minds in a variety of sectors including advanced manufacturing, aerospace, education, healthcare and agriculture.

Innovative technology companies in areas such as digital (ICT), cleantech, agtech and healthcare, can find support locally at the Innovation Cluster, a not-for-profit organization that provides advisory services and access to angel investment. The Cube, operated by the Innovation Cluster, is 10,000+ square feet of incubator and accelerator space providing companies at all stages of growth with the tools, mentorship and operational support to be successful.

1 in 5 workers in Peterborough's Manufacturing Sector are employed in Creative Occupations.
 Engineers / Designers / Specialized Equipment Operators

The highest wage earners in the service sector are in creative occupations.

\$57,509	
Creative Occupation	
\$34,433	
Working Occupation	
\$25,151	
Service Occupation	



⁴ Martin Prosperity Institute "Who Works Where In Peterborough Overview"
<http://peterboroughed.ca/wp-content/uploads/who-works-where-in-peterborough-overview.pdf>
⁵ http://www.huffingtonpost.ca/richard-florida/canadas-most-creative-cit_b_1608460.html
⁶ http://www.huffingtonpost.ca/richard-florida/canadas-most-creative-cit_b_1608460.html

Entrepreneurial Spirit

In keeping with a growing trend in Canada, entrepreneurship, startups and microbusinesses play a celebrated and integral role in Peterborough & the Kawarthas' economy.⁷ These small-scale local businesses add a unique flavour to the Peterborough & the Kawarthas business community with a wide range of offerings from finance to food businesses, from manufacturing to the arts.

- 50% of Peterborough & the Kawarthas' businesses are owner-operated.⁸
- Peterborough has the highest rate of Immigrant Entrepreneurship in Canada. 36% of New Canadians in Peterborough own their own business.⁹

Shorter Commute Times

With one of the shortest average commute times in the Province of Ontario, living and working in Peterborough means you will spend less time driving through traffic to get to and from work, and more time enjoying life.

Peterborough & the Kawarthas boasts one of the shortest average commute times in Ontario...



Average Commute Time by CMA Barrie, 29.6 mins / Oshawa, 31.8 mins / Toronto 32.8 mins

Peterborough	89 hours
Oshawa	128 hours
Toronto	132 hours
Barrie	119 hours

And spend 30 hours less time in the car, annually.¹¹

In fact, for **77.7%** of commuters, travel time is less than 30 minutes.¹²

Spend less time chewing through traffic and more time enjoying life!

Major Employers in Peterborough & the Kawarthas

- AON Inc.
- BWXT Canada Ltd.
- Central East Community Access Centre
- Fleming College
- Flying Colours Corporation
- General Electric Canada
- Kawartha Pine Ridge District School Board
- McCloskey International
- Ministry of Natural Resources
- PepsiCo/Quaker
- Peterborough Victoria Northumberland and Clarington Catholic District School Board
- Peterborough Regional Health Centre
- Rolls-Royce Civil Nuclear
- Savage Arms
- SGS Lakefield Research
- Shorelines Slots at Kawartha Downs
- Siemens Milltronics
- Sysco
- Trent University
- Ventra Plastics

QUICK FACT

Peterborough & the Kawarthas Economic Development has helped over 257 businesses to start-up, expand or relocate to the region since 2012.

⁷ 1 in 15 Canadians is self employed. <http://www.mri.gov.on.ca/obr/2012/05/the-small-business-faqs/>

⁸ <http://www.cfcp.ca/downloads/Greater-Peterborough-Vital-Signs-2013-Final.pdf>

⁹ Benchmarking the Global Attractiveness of Canadian Cities Report <http://www.conferenceboard.ca/e-library/abstract.aspx?did=6441>

¹⁰ http://www12.statcan.gc.ca/nhs-enm/2011/as-sa/99-012-x/99-012-x2011003_1-eng.pdf

¹¹ Based on 241 work days; Monday to Friday; with Public holidays off and two weeks of vacation

¹² http://www12.statcan.gc.ca/nhs-enm/2011/as-sa/99-012-x/99-012-x2011003_1-eng.pdf





Peterborough & the Kawarthas Labour Force

The backbone of any strong business is its employees. Peterborough & the Kawarthas diverse labour force has a range of skills and educational backgrounds to suit the needs of a post-industrial economy.

Peterborough Labour Force Characteristics¹³

	Thousands		Change (thousands)
	July '15	July '16	
Peterborough (ON)			
Labour force	66.9	61.7	- 5.2
Employment	62.3	58.1	- 4.2
Unemployment	4.6	3.6	- 1.0
Unemployment rate (%)	6.9	5.8	- 1.1
Participation rate (%)	64.1	59.0	- 5.1
Employment rate (%)	59.7	55.5	- 4.2

Entrepreneurship is growing in Peterborough & the Kawarthas.

50%

of Peterborough businesses are owner-operated.¹⁴

36% of New Canadians in Peterborough are self-employed.*¹⁵

*The highest rate in Canada

80% of all new jobs will come from companies under 5 years old.¹⁶

¹³ <http://www.statcan.gc.ca/tables-tableaux/sum-som/101/cst01/fss04e-eng.htm>

¹⁴ <http://www.cfpg.ca/downloads/Greater-Peterborough-Vital-Signs-2013-Final.pdf>

¹⁵ <http://www.conferenceboard.ca/e-library/abstract.aspx?did=6441>

¹⁶ <http://www.kauffman.org/what-we-do/research/firm-formation-and-growth-series/where-will-the-jobs-come-from>

Labour Force by Industry¹⁷

Peterborough (CMA) – Proportion of the population aged 15 years and over by level of educational attainment and age groups.

72,962

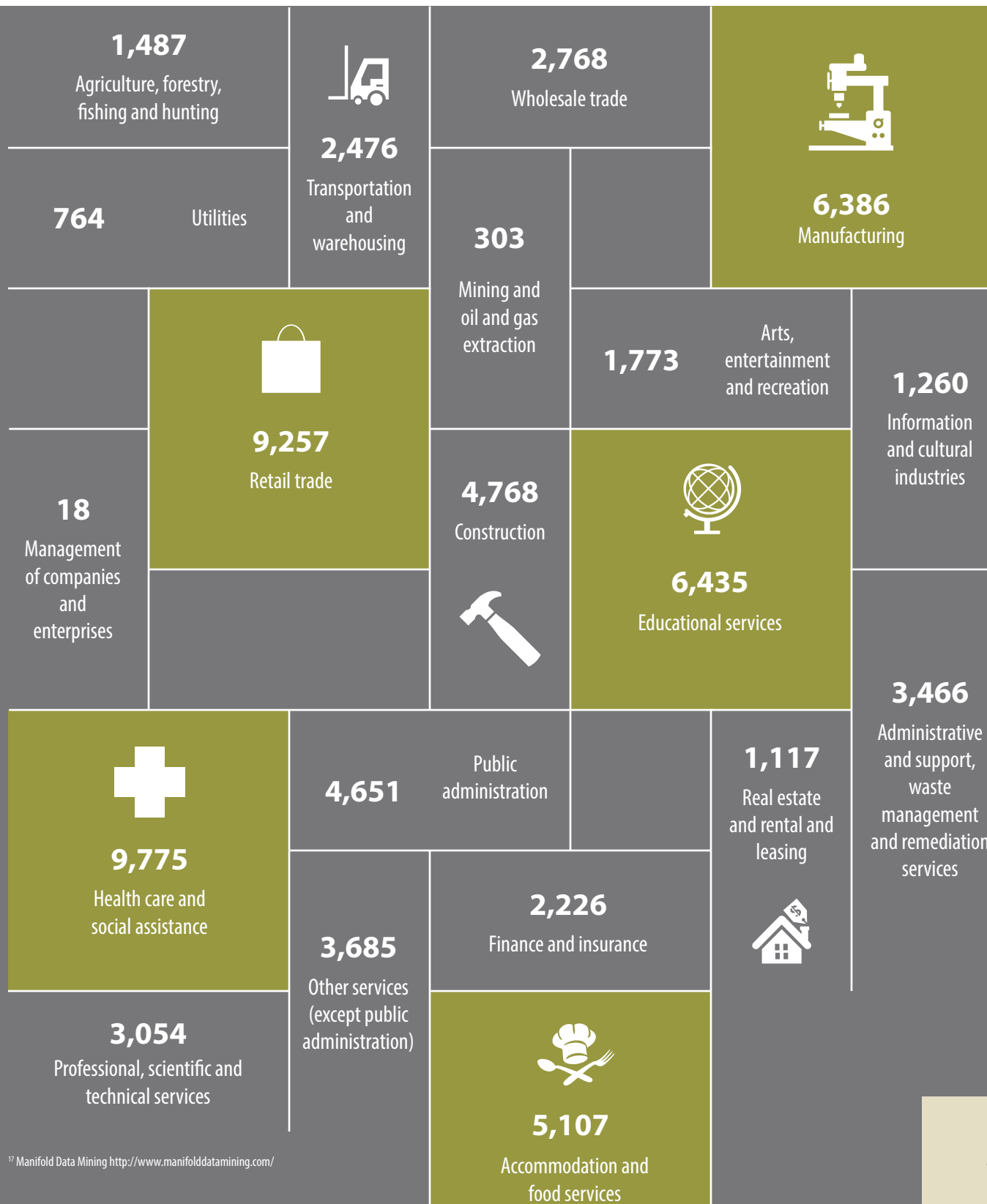
Total labour force aged 15 and over

2,185

Industry — not applicable

70,777

All industries



¹⁷ Manifold Data Mining <http://www.manifolddatamining.com/>



Invest in Peterborough & the Kawarthas

Strategic Location

Peterborough & the Kawarthas is attractively located in proximity to major markets in the Greater Golden Horseshoe (GGH)¹⁸, Canada and the Northeastern United States. The region is located just 90 minutes northeast of Toronto and 3.5 hours from our nation's capital in Ottawa.

Economic Diversity

Unlike traditional manufacturing communities that tend to focus on one sector – Peterborough has long been a place where industrial, agricultural and cultural businesses cooperate, collaborate and flourish. Major employers cover a range of diverse business sectors including advanced manufacturing, aerospace, cleantech, nuclear energy, education, healthcare, agriculture & food processing and tourism industries.

Infrastructure

We have integrated, accessible highway and rail links to get products to market. We are located on effective transportation systems for people and freight — road, rail and air — including an expanding commercial airport. Peterborough has fully-serviced industrial parks on major accessible highways with available sites to meet the needs of businesses of all sizes.

Peterborough is accessible to Trans-Canada Highway 401 via Highway 115. It has also been announced that Highway 407 (toll road) will extend to reach Highway 115 by the year 2020. Highway 7 connects Peterborough with Ottawa to the east.

There is existing freight rail service from Toronto to Peterborough to Havelock. Recently VIA Rail has announced plans for new passenger train service between Toronto and Quebec City with a stop in Peterborough. GO Bus service extends to Peterborough and connects to the Lakeshore GO Train in Oshawa.

Affordability

Peterborough & the Kawarthas offers competitively costed residential, commercial and industrial space in Ontario. A more affordable cost of operation equates with more reasonable and sustainable growth for local businesses. Ontario offers a competitive tax environment.

**Contact our Business Development Team
for Peterborough tax information**

info@peterboroughed.ca
705-743-0777 Ext. 2127

¹⁸ Home to 2/3 of Ontarians. <http://www12.statcan.ca/census-recensement/2006/as-sa/97-550/p14-eng.cfm>

Technology Infrastructure

Most of the Peterborough & the Kawarthas is equipped with high speed Internet. As of 2015, Bell Canada has invested more than \$35 million to bring Fibe Internet services to Peterborough with a state-of-the-art broadband Fibre to the Home (FTTH) network.

Trent Research and Innovation Park

A new 85-acre research and technology park is being developed adjacent to Trent University in Peterborough, Ontario. Slated to open in 2018, the park will build on existing clusters of research, development and innovation activities in the cleantech sector; in particular, the park offers the opportunity to leverage expertise in water-related, contaminant analysis and biomaterials at Trent University and surrounding institutions.

Peterborough & the Kawarthas is part of a recently designated Regional Centre of Expertise (RCE) on Education in Sustainable Development by the United Nations University as endorsed by UNESCO — 1 of 8 RCEs in all of Canada.

Peterborough Airport

The Peterborough Airport boasts the longest paved civil runway between Ottawa and Toronto. Its new 7,000 foot runway and infrastructure is designed to support narrow body aircraft such as the Boeing 737 and Airbus 320 series. The airport has recently seen over \$35 million of expansion and infrastructure improvements since 2010.

The Peterborough Airport serves a global clientele from domestic and trans-border fractional ownership operators, to the international needs of Canadian industry icons.

Eager & Educated Workforce

Peterborough & the Kawarthas is home to an eager and dedicated labour force of highly qualified professionals, as well as three outstanding post secondary institutions. Similar to the national average¹⁹, the majority of our labour force is well-educated with some form of post secondary education, with a particular emphasis on practical learning — one of Ontario's highest proportions of those with either a college diploma or trades certification.²⁰

Contact our team for more information on the Trent Research and Innovation Park

info@peterboroughed.ca
705-743-0777 Ext 2126



Accessible to Major Markets²¹

Travelling to	Distance	Drive Time
Toronto, ON	140 Km	1h 40min
Ottawa, ON	270 Km	3h 10min
Kingston, ON	186 Km	2h 10min
Kitchener-Waterloo, ON	230 Km	2h 40min
Niagara Falls, ON	265 Km	3h 20min
Montreal, QC	470 Km	4h 45min
Cleveland, OH	610 Km	6h 30min
Detroit, MI	520 Km	6h 20min
New York, NY	785 Km	7h 55min

¹⁹ 58.7% of Peterburians vs 59.6% of Canadians – according to Statistics Canada National Household Survey Focus on Geography Series 2011. “Population aged 25 and over by highest level of educational attainment, Peterborough (CMA), Ontario, Canada”. <https://www12.statcan.gc.ca/nhs-enm/2011/as-sa/fogs-spg/Pages/FOG.cfm?lang=E&level=3&GeoCode=529>

²⁰ <http://www.fin.gov.on.ca/en/economy/demographics/census/nhshi11-4.pdf>

²¹ Distances and Drive Times have been calculated from City Centre to City Centre



Photo Property of Noblegen Inc.

Our Sectors

Advanced Manufacturing

Peterborough & the Kawarthas' manufacturing sector has a long history. Over the years its landscape has changed, evolving to remain competitive. We are equally as proud of the small businesses and entrepreneurs who are helping to forge the path into the future.

Peterborough is not your typical blue collar community. A higher than average number of our creative class workers are employed in the manufacturing sector.²² Rather than having an old school, assembly-line mentality, the business models of our manufacturing companies include custom engineering, innovation and LEAN manufacturing.

Peterborough's Advanced Manufacturing sector supplies to the Aerospace, Nuclear, Clean Technology, Power Generation, Automotive, Food & Beverage, and Instrumentation/Automation industries.

PeterboroughED.ca/advanced-manufacturing

Agriculture

In the Province of Ontario, agriculture is a significant economic driver – creating jobs and economic impact throughout its rural communities. Agriculture supports nearly 158,000 jobs with \$8.1 billion in wages and salaries. Our region has an emphasis on innovation and a deeply rooted interconnection between farmers' products and the tables of local chefs and restaurateurs.

Our region's first farmers were a resilient and innovative bunch with ideas and crops that would shape the community's reputation and landscape – this holds true today. Some local innovations include: Red Fife Wheat, farms with an emphasis on sustainable practices including producers that focus on insect protein and animal welfare.

As of 2011, there were over 1000 farms operating in the region – with farms growing everything from grains and oilseeds, to livestock, to fresh produce – and everything in between. In peak season, there are eight farmers' markets that operate throughout Peterborough & the Kawarthas.

PeterboroughED.ca/agriculture

²² <http://peterboroughed.ca/wp-content/uploads/who-works-where-in-peterborough-overview.pdf>

Aerospace

For far too long, Peterborough's untapped potential for growth in the aerospace sector and aviation industry has been one of our best kept secrets. Well, the secret is out – and we're ready to take off. With a community of operations at and in close proximity to the recently upgraded Peterborough Airport and aerospace business park, Peterborough is an up-and-coming base for national and international companies specializing in maintenance, repair and overhaul; research and development; and training.

Our unique offerings include: excellent access to unrestricted airspace, a highly skilled workforce, industry leading training facilities and desirable infrastructure to reduce top line costs.

PeterboroughED.ca/aerospace

Clean Technology

The clean technology sector is offering solutions rooted in sustainability to address some of the biggest challenges facing our communities and the globe. Ontario has a strategic focus on environmentally friendly technologies and is home to 35% of Canada's innovative cleantech companies.

Peterborough & the Kawarthas is an emerging centre for clean technology with an abundance of rich natural resources, innovative tech companies and access to talent and world-class research facilities at Trent University in water tech, contaminant analysis and biomaterials located here in Peterborough. The region is also located in close proximity to Fleming College's Centre for Alternative Wastewater Treatment in Lindsay. With the newly developed Trent Research & Innovation Park on the horizon, now is an ideal time to start and grow a cleantech business here.

PeterboroughED.ca/cleantech

Tourism

Approximately 6 million people live within a 320 km radius. The tourism industry here has over 1000 businesses from accommodation and food & beverage to retail, transportation and arts, culture and heritage, all of whom have an important part in serving visitors and contribute to making lasting impressions and encouraging return visitation to the area. Our destination offers a multitude of experiences and has a combination of internationally known tourism brands alongside many unique, innovative and entrepreneurial tourism businesses. Our rich mix of heritage city, cottage country and flourishing farmlands – unique in Ontario – makes investing, living and visiting here something out of the ordinary.

PeterboroughED.ca/tourism-development

Startups & Small Businesses

Small businesses and entrepreneurs add a uniqueness to the fabric of our business community. It's all about that personal connection.

Peterborough was designated as part of the Startup Canada Communities Network. Since then, Peterborough continues to be recognized as an outstanding place for entrepreneurs to do business. In the past two years, the work of local companies Entomo Farms and NobleGen has garnered the attention of the national startup community with local companies receiving Startup Canada awards at the regional and national level.

There are many resources in Peterborough & the Kawarthas to help entrepreneurs succeed in their ventures.

PeterboroughED.ca/small-business





Live in Peterborough & the Kawarthas

Imagine escaping to a place where the community is vibrant, the natural beauty is breathtaking and the people are genuine. We are not talking about a vacation. We are talking about finding that daily balance that everyone is striving for.

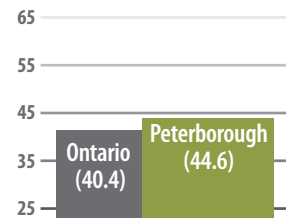
Whether you choose to live footsteps from downtown or on a serene lake, the cost of living throughout the Peterborough & the Kawarthas is more affordable than in other urban and suburban areas in the province. The region also allows you to blend the best of small town, cottage living with the convenience of a vibrant city centre.

Peterborough – eager and experienced



Median Age

A slightly higher median age positions Peterborough to lead the way as Baby Boomers age across the Province



Age Distribution²⁵

Female 0-14	Female 15-24	Female 25-34	Female 35-44	Female 45-54	Female 55-64	Female 65+
9,574	8,397	8,608	7,248	10,012	11,339	17,478
Male 0-14	Male 15-24	Male 25-34	Male 35-44	Male 45-54	Male 55-64	Male 65+
9,930	8,535	8,597	6,839	9,092	10,269	14,133

²³ <http://www.cfcp.ca/downloads/Greater-Peterborough-Vital-Signs-2013-Final.pdf>

²⁴ Martin Prosperity Institute Who Works Where in Peterborough <http://peterboroughed.ca/wp-content/uploads/who-works-where-in-peterborough-overview.pdf>

²⁵ Stats Can Data compiled by Manifold Data Mining

Demographics

Peterborough & the Kawarthas offers the best of both worlds – a growing population of young professionals and an average age that is slightly higher than the province at-large.²⁶

This means that our labour force offers the eagerness and recent educational experience of the young professionals along with the life experience and mentorship abilities of more seasoned professionals – a dynamic coupling for business growth and expansion opportunities.

Peterborough & the Kawarthas is also known to be home to Canada's largest ratio of seniors – nearly 1 in 5 people in the Peterborough CMA are over age 65. Our region is setting the bar for aging communities, as all communities are set to have a large number of seniors as the baby boomers approach retirement age.

To Your Health

Life in Peterborough & the Kawarthas, with plenty of green space, walkable communities and time for work-life balance, is just what the doctor ordered.

- Perceived health and life stress are better than the provincial averages.
- Obesity rates below the provincial average.
- Better than average physical activity in leisure time.²⁷
- More family physicians than the provincial average (102/100,000 in Peterborough vs. the Ontario average of 95/100,000).²⁸

The region is home to many health centres, long-term care facilities and to the Peterborough Regional Health Centre (PRHC) a state-of-the-art facility with 494 beds. PRHC services Peterborough and Peterborough County, as well as a referral population of 600,000 people in the four counties which comprise the Central East Local Health Integration Network (LHIN).²⁹

Education

Peterborough is home to 3 outstanding post-secondary institutions. Trent University continues to hold a top spot in Maclean's magazine's list of undergraduate universities. Seneca College's School of Aviation recently opened its doors in Peterborough. Fleming College's Kawartha Trades & Technology Centre, is a state-of-the-art training facility where tradespeople are gaining real-world experience and experiential learning opportunities.

Trent University

Founded in 1964, Trent has recently celebrated its 50th Anniversary in Peterborough. This research-intensive institution, with small class sizes and a tremendous sense of community, encourages its students to challenge the way they think. The Peterborough campus is set on the shores of the Otonabee River with a connection to nature. Trent offers undergraduate liberal arts and sciences, as well as 12 graduate programs, the only Indigenous Studies PhD program in Canada and is world-renowned for excellence in its environmental sciences research and teaching programs.

Fleming College

Fleming College has campus locations in Peterborough, Lindsay, Cobourg and Haliburton and features more than 90 full-time programs in Business, Community Development, Environmental and Natural Resource Sciences, Fine Arts, Health and Wellness, Law and Justice, and Technology and Skilled Trades.

Seneca College

Seneca's Peterborough campus offers the only aviation technology-based degree program in Canada. Seneca has been the national leader in aviation education for more than 40 years. The Bachelor of Aviation Technology program provides a rigorous curriculum and the application of theory to aviation practices. This program is accredited by the Aviation Accreditation Board International (AABI).

²⁶ <http://www.cfpg.ca/downloads/Greater-Peterborough-Vital-Signs-2013-Final.pdf>

²⁷ <http://www12.statcan.gc.ca/health-sante/82-228/details/page.cfm?Lang=E&Tab=1&Geo1=HR&Code1=3555&Geo2=PR&Code2=35&Data=Rate&SearchText=Peterborough%20County-City%20Health%20Unit&SearchType=Contains&SearchPR=01&B1=All&Custom=&B2=All&B3=All>

²⁸ <http://www12.statcan.gc.ca/health-sante/82-228/details/page.cfm?Lang=E&Tab=1&Geo1=HR&Code1=3555&Geo2=PR&Code2=35&Data=Rate&SearchText=Peterborough%20County-City%20Health%20Unit&SearchType=Contains&SearchPR=01&B1=All&Custom=&B2=All&B3=All>

²⁹ <http://www.prhc.on.ca/default-category/about-prhc>



Our Community.

One vibrant city. Eight diverse townships. Two First Nations communities. Peterborough & the Kawarthas has a unique blend of urban, rural and cottage lifestyles. Learn more about the communities that make up our region.

Population

	2016 ³⁰	2025 (proj)
City of Peterborough	81,032	89,869
County of Peterborough	138,236	144,241
Township of Asphodel-Norwood	4,109	3,669
Township of Cavan Monaghan	8,829	8,279
Curve Lake First Nation	1,059	1,199 ³¹
Township of Douro-Dummer	6,709	6,623
Township of Havelock-Belmont-Methuen	4,530	4,367
Hiawatha First Nation	362	N/A ³²
Township of North Kawartha	2,479	2,220
Otonabee-South Monaghan Township	6,670	6,591
Township of Selwyn	17,060	16,847
Municipality of Trent Lakes	5,397	4,817

³⁰ Manifold Data - www.manifolddatamining.com

³¹ Based on on-reserve population, Projected population to 2028

³² Projected population not available



Our Community

Township of Asphodel-Norwood

The Township of Asphodel-Norwood is a friendly community with a blend of rural and village life. Businesses looking to relocate or start-up in this township can join a thriving business community with strength in agriculture, transportation and extraction industries. Just 30 minutes from the City of Peterborough, the township offers small-town life close to urban conveniences.

Located in the Township: Norwood, Westwood, Ouse River

Be sure to check out: The Norwood Fall Fair

Top 3 Industries:

Agriculture

Tourism

Custom Fabrication/Manufacturing

Township of Cavan Monaghan

Nestled amongst the rolling hills of southwestern Peterborough County is the Township of Cavan Monaghan. A small, rural community with breath-taking natural beauty, the Township of Cavan Monaghan is conveniently located just 20 km south west of the City of Peterborough and just 90 minutes north east of the City of Toronto. Accessible to major highways, Cavan Monaghan is home to manufacturers, farmers, retail and service businesses and the Peterborough Airport. It offers a mix of industrial, agricultural and commercial investment opportunities.

Located in the Township: Bailieboro, South Monaghan, Cavan, Fraserville, Ida, Mount Pleasant, Springville, Five Mile Turn, and Millbrook

Be sure to check out: 4th Line Theatre, Millbrook Valley Trails, Kawartha Downs and Speedway, Shoreline Slots at Kawartha Downs, Peterborough Speedway, Historic Downtown Millbrook, or any one of our beautiful golf courses

Top 3 Industries:

Manufacturing

Health Care and Social Assistance

Retail Trade



Curve Lake First Nation

Curve Lake First Nation is a vibrant community with a celebrated cultural uniqueness, located approximately 35 minutes northeast of Peterborough, on the shores of the Trent-Severn Waterway. CLFN is seen as a model community for surrounding First Nations, with strong connections to traditional ways of life in culture and language, experiences geared to tourists and a connection to nature.

Located in the Township: Buckhorn Lake

Be sure to check out: Curve Lake Cultural Centre, Whetung Ojibwa Centre, Curve Lake First Nation Pow Wow in September

Top 3 Industries:
Construction
Professional Services
Retail

Township of Douro-Dummer

Douro-Dummer is five minutes east of the City of Peterborough and has several quaint villages, rolling drumlins and acres of viable farmland. Home to many farms, commercial and industrial operations and tourism businesses. The relaxing atmosphere offers a diverse setting for current and future businesses. The diversity of our geography offers an array of things to do in the area and it truly has many magnificent places to discover!

Located in the Township: Douro, Warsaw, Clear Lake, Katchewanooka Lake and Stoney Lake

Be sure to check out: Warsaw Caves, Robert Johnston Eco Forest Trails, Cottage resorts with fishing, boating and beautiful views

Top 3 Industries:
Tourism
Aggregate
Recreation



Township of Havelock-Belmont-Methuen

Havelock-Belmont-Methuen is a charming rural community located at the southeast reaches of Peterborough County. It is a scenic community suited to outdoor recreation with an abundance of lakes, rivers and trails. There are a variety of businesses with investment opportunities for commercial and industrial development. The township is centrally located on Highway 7 between the cities of Peterborough and Belleville with an active rail yard.

Located in the Township: Village of Havelock, Belmont Lake, Cordova Lake, Crowe Lake, Jack Lake, Kasshabog Lake, Methuen Lake, Oak Lake, Twin Lakes

Be Sure to Check out: Havelock Country Jamboree and Havelock Recreation & Performance Motor Show

Top 3 Industries:

Retail & Service
Tourism
Aggregate & Mining

Hiawatha First Nation

The community of Hiawatha First Nation is located on the north shore of Rice Lake approximately 20 minutes from Peterborough just east of the Otonabee River. Mississaugi people have made this area home since the 17th century. Today the community remains a vibrant, proud, independent and healthy people balanced in the richness of their culture and traditional way of life.

Located in the Township: Rice Lake

Be sure to check out: The Old Railroad Stop, Hiawatha First Nation Pow Wow every May long weekend, and Aboriginal Day in June for lots of fun activities

Top 3 Industries:

Retail & Service
Tourism & Hospitality
Building & Construction



Township of North Kawartha

Set against the backdrop of lush forests and scenic waterfront, the Township of North Kawartha is a vibrant, accessible and growing community. Located between Peterborough and Bancroft, there are service, retail and commercial operations that support the permanent and seasonal residents of the area. The region offers opportunities for development and business growth, particularly in hospitality sector and in support of the Provincial Parks in the township

Located in the Township: Apsley, Woodview, Big Cedar, Jack Lake, Chandos Lake

Be sure to check out: Petroglyphs Provincial Park, Kawartha Highlands Provincial Park, cottage living

Top 3 Industries:

Tourism
Construction
Retail

Otonabee-South Monaghan Township

Otonabee-South Monaghan is a picturesque rural community well known for its award-winning agricultural businesses and innovative heritage attractions. Nestled on the north shore of Rice Lake, OSM Township is a popular place to visit with friends and family. OSM's specialties are its local food, fishing resorts and its country lifestyle. The township's commercial corridor on Highway 7 has easy access to Highway 115 and serves a regional population within the City & County of Peterborough.

Located in the Township: Keene, Bailieboro, Rice Lake, Indian River, Otonabee and Fraserville

Be sure to check out: Fishing & Boating on Rice Lake & the Trent-Severn Waterway, Local food fresh from our farms to your table, Unique outdoor experiences from Agri-tourism to ZIM Gallery

Top 3 Industries:

Agriculture
Hospitality
Building & Construction



Township of Selwyn

Known for its exceptional quality of life, natural beauty and active community members, the Township of Selwyn is centrally located in Peterborough County. The Township is diverse in its economic offerings with opportunities in agriculture, tourism, small business and manufacturing. Property is available for commercial development, this is an affordable place to start, relocate or expand a business, with a welcoming and supportive community.

Located in the Township: Lakefield, Bridgenorth, Ennismore, Lake Katchewanooka, Chemong Lake, Otonabee River

Be sure to check out: Lakefield Literary Festival (and the area's unique literary heritage), festivals and events throughout the year, scenic streetscapes and lakeviews

Top 3 Industries:

Agriculture
Tourism
Research and Technology

Municipality of Trent Lakes

Trent Lakes is a community that has something to offer everyone within a short commute to urban amenities in Peterborough, Belleville and the Eastern GTA. We are a diverse community with numerous opportunities for sport and fitness and a natural environment that will satisfy any outdoor adventurer. Packaged with numerous prospects for investors, entrepreneurs, go-getters, developers and dreamers, with close-by infrastructure to connect to global markets, Trent Lakes could very well be just what you are looking for.

Located in the Township: Buckhorn, Lakehurst, Kinmount, Cavendish, Buckhorn Lake, Upper Chemong Lake, Pigeon Lake, Crystal Lake, Catchacoma Lake, Mississagua Lake

Be sure to check out: Cottage living, dockside fishing, Kawartha Highlands Provincial Park

Top 3 Industries:

Tourism and Hospitality
Retail and Commercial
Industrial and Aggregate Extraction



PeterboroughED.ca

Redefine your success in
Peterborough & the Kawarthas

Peterborough & the Kawarthas Economic Development
info@peterboroughed.ca
705-743-0777

Peterborough
— & —
THE KAWARTHAS

ECONOMIC DEVELOPMENT